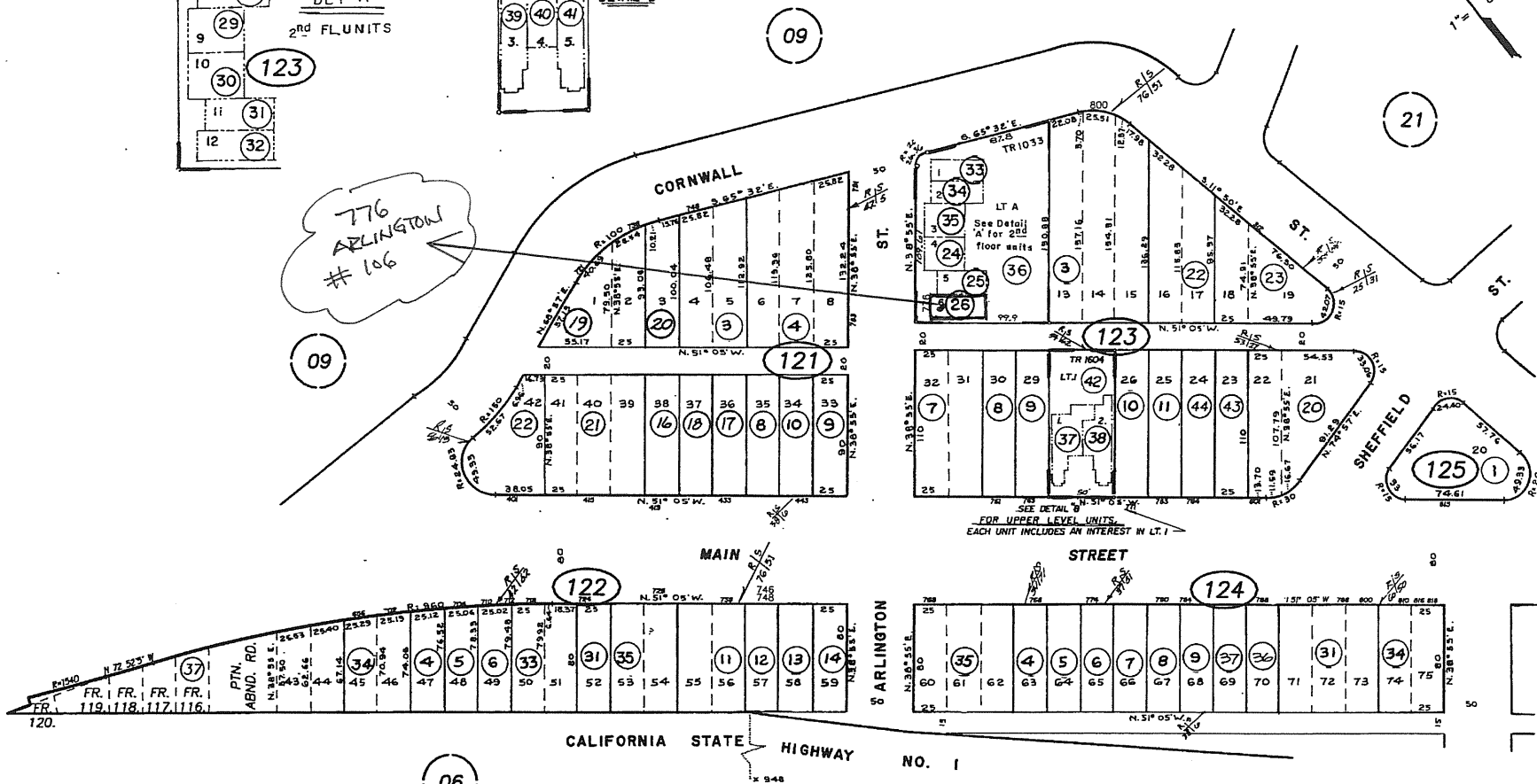


776 ARLINGTON # 106



REVISIONS	
LS	DATE
MA	07-25-03

40' 80' 160'

JAW
02-04-02 THIS MAP IS PREPARED FOR ASSESSMENT PURPOSES ONLY.

CONDO PLAN TR. 1033, O.R. 2758-969
" " TR 1604, " 3343-251

CAMBRIA PINES UNIT NO. 7, R.M. Bk. 5, Pg. 7.

4UG 0 6 2003
CAMBRIA
ASSESSOR'S MAP, COUNTY OF
SAN LUIS OBISPO, CA.
BOOK 022 PAGE 12